

SUNLIGHT INTENSITY TRANSMITTER MMSP1

MMSP1 can be used for detecting the sun light intensity. The transmitter has an integrated amplifier which amplifies the measured intensity to four different output signals (three voltage signals and one current signal).

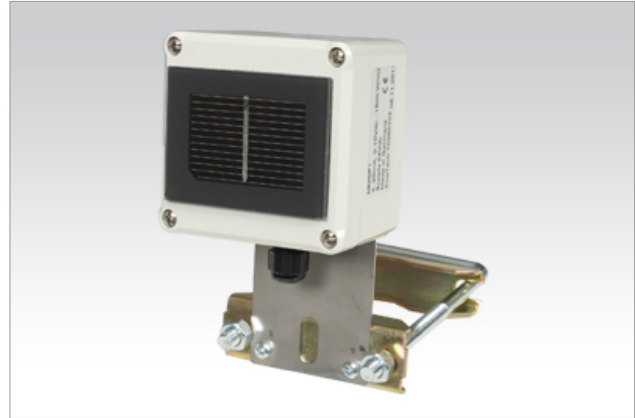
Mounting

- A removable pole mounting bracket is supplied with the product.
- The device can be mounted outdoors under any angle of inclination.
- To achieve best water protection, mount the device so that the gable gland doesn't point upwards.
- Mount the device in parallel with the measured surface.

Wiring

0...10 Vdc	1	U_{10}	MMSP1
0...3.125 Vdc	2	$U_{3.125}$	
0...150 mVdc	3	U_{PH}	
Supply, 5...30 Vdc	4	V_{DC}	
4...20 mA +	5	I_{IN}	
0 V / 4...20 mA -	6	GND/ I_{OUT}	
	T_1		
	T_2		

NOTE: Only one measuring output can be used at a time.



Technical data

supply	5...30 Vdc, approx. 30 mW
range	0...1500 W/m ²
accuracy	± 5 % (annual mean)
outputs	*0...10 Vdc 0...3.125 Vdc 0...150 mV *4...20 mA, < 500 Ω
cable gland	M16
housing	IP65
dimensions	80 x 150 x 60 mm
	* Supply must be at least 12 V.

Order guide

Model	Product no.	Description
MMSP1	1133360	sunlight intensity transmitter

Products fulfil the requirements of directive 2004/108/EC and are in accordance with the standards EN61000-6-3: 2001 (Emission) and EN61000-6-2: 2001 (Immunity).